

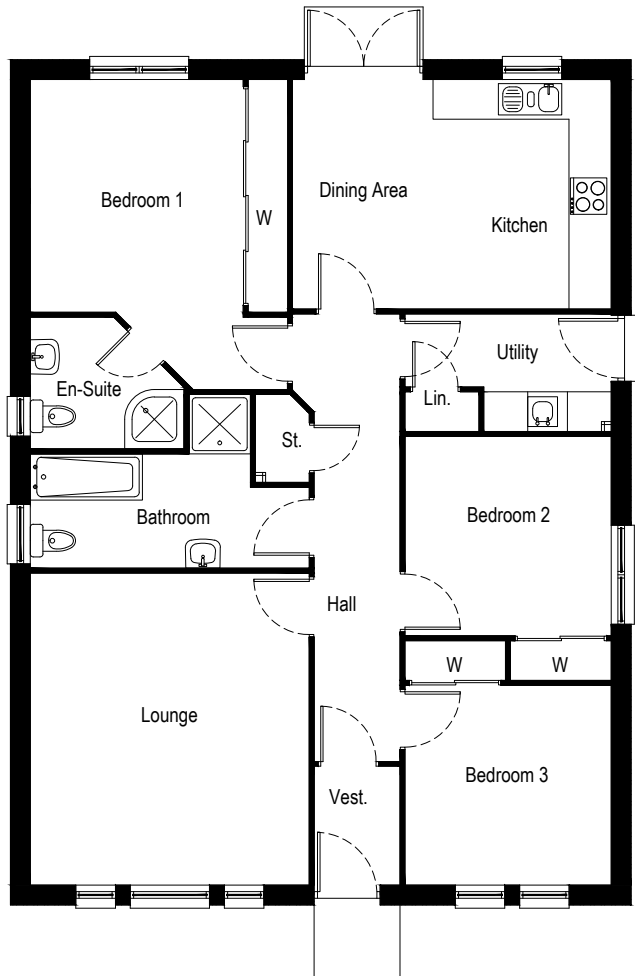
OSIER

3 BEDROOM DETACHED HOUSE



CASTLEWOOD AS INDIVIDUAL AS YOU





Floor Plan

Kitchen	2845mm x 3475mm	9'2" x 11'5"
Dining	1980mm x 3475mm	6'6" x 11'5"
Lounge	4725mm x 4225mm	15'6" x 13'10"
Utility	1780mm x 3050mm	5'10" x 10'0"
Bathroom	1730mm x 3335mm	5'8" x 10'11"
En-suite	1995mm x 2330mm	6'7" x 7'8"
Bedroom 1	3525mm x 3225mm	11'7" x 10'7"
Bedroom 2	3020mm x 3125mm	9'11" x 10'3"
Bedroom 3	3025mm x 3125mm	9'11" x 10'3"

Total Floor Area: 107m²

All measurements given above are approximate and intended as a guide only